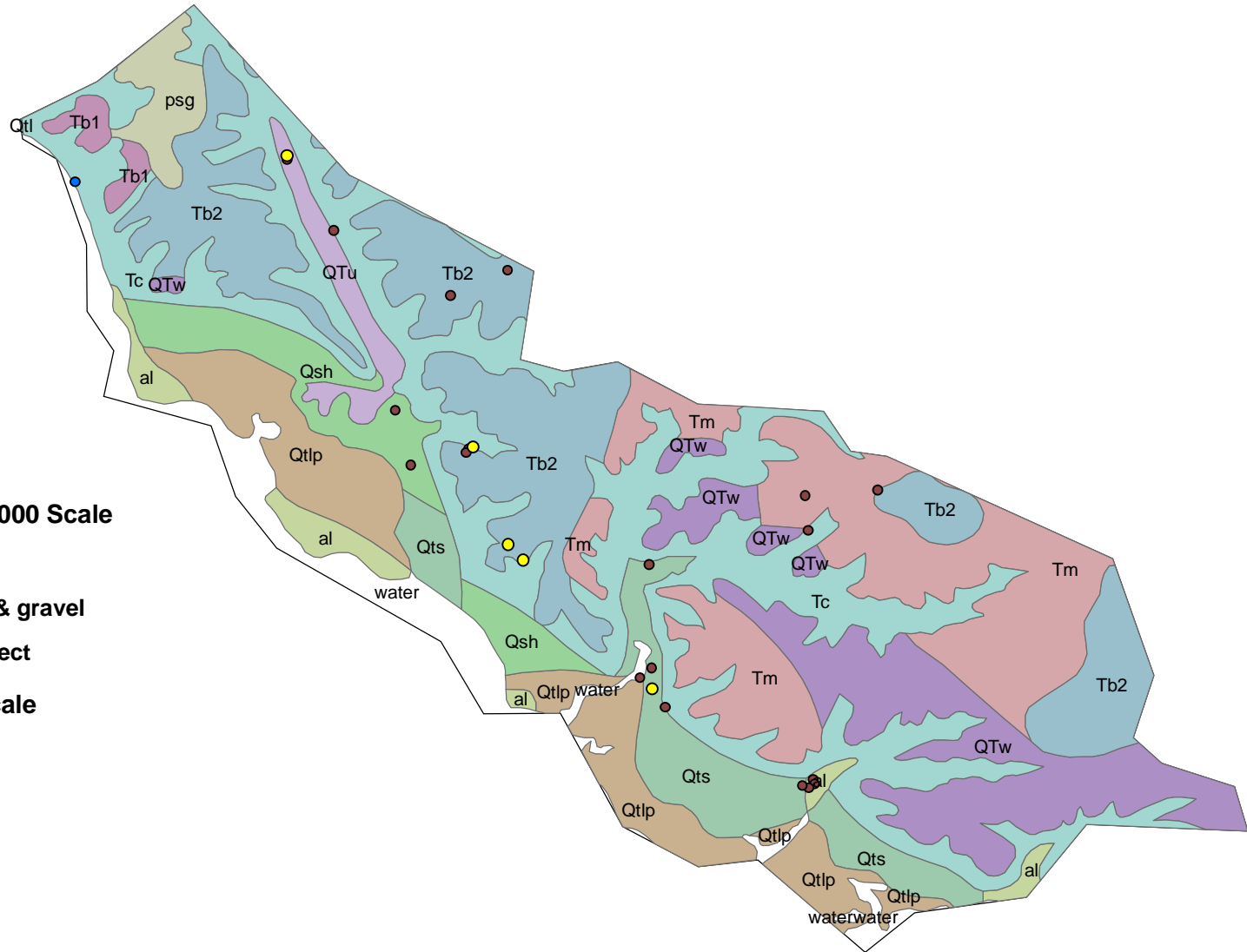


Geology and Mineral Resources, Richmond County, Virginia

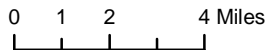


Point Locations - 1:24,000 Scale

- Active mines
- Historical sand & gravel
- Diatomite prospect

Geology - 1:500,000 Scale

■ al	■ QTw
■ QTu	■ Tm
■ Qtl	■ Tb1
■ Qtlp	■ Tb2
■ Qts	■ Tc
■ Qsh	■ psg



Disclaimer

This dataset is provided as is. Variable conditions arising from physical sources used to develop the data may be reflected in the data. It is designed for use at the designated scale and should not be enlarged or used for making site-specific decisions. Users must be aware of possible errors in scale, resolution, rectification, positional accuracy, development methodology, and other circumstances specific to this dataset when using information contained herein. Distribution of this map is intended for information purposes and should not be considered authoritative for navigational, engineering, legal or other site-specific uses.

Virginia Department of Mines, Minerals and Energy
 Division of Mineral Resources
 Charlottesville, VA
 February 27, 2007